

REPIPE

Pipe, Connections & Valves

Connecting Australia

Y STRAINER GROOVED
END TYPE

ISO 9001 CERTIFIED COMPANY

Y STRAINER GROOVED END TYPE

FEATURES

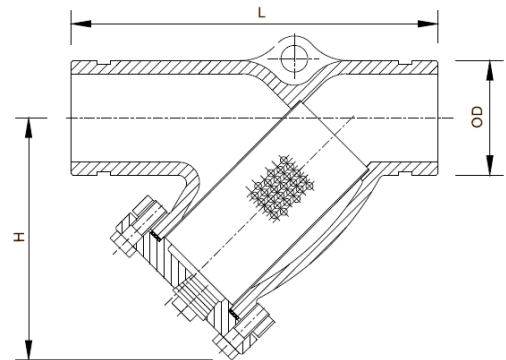
- Installed in Both Horizontal or Vertical Line With Upward Flow
- Easier and Faster to Maintain and Install
- Ductile Iron Body (ASTM A 536)
- Standard Surface Finish: FBE Coated Interior and Exterior
- Screen: Stainless Steel 304 Perforated
- NPT or BSPT Blowoff Outlet on Cover. Blowoff Outlets are Finished with Plugs.
- Recessed Seat in Body Assures Accurate Screen Alignment
- Groove Dimensions Comply With AWWA C606 Standard



Model #7901

TECHNICAL DATA

- Code: F-YSG-(size DN)
- Size Range: DN50- DN300
- Working Pressure: 16 Bar
- Working Temp.: -10°C to 120°C
- Colour: Blue RAL5015 / Red Epoxy
- Mesh: DN50 -150 = 1.5mm hole
DN200-300 = 3.0mm Holes



DIMENSIONS

Size	50	65	80	100	125	150	200
OD	60.3	76.1	88.9	114.3	141.3	165.1	219.1
L	225	225	318	375	448	502	640
H	190	285	230	270	340	380	482
Plug	½"	1"	1"	1"	1 ¼"	1 ½"	1 ½"
Hole Diameter	1.5	1.5	1.5	3.0	3.0	3.0	3.0
Weight (kg)	7.0	10.7	13.4	21.0	35.6	54.2	100.0

All dimensions in mm.

MATERIAL LISTING

Part Name	Material	EN Spec.	ASTM Spec
Body	Ductile Iron	EN-JS1050	ASTM A536 65-45-12
Cover	Ductile Iron	EN-JS1050	ASTM A536 65-45-12
Screen	Stainless Steel	BS970 304S15	AISI 304
Gasket	Teflon	Commercial	Commercial
Plug	Ductile Iron	EN-JS1050	ASTM A536 65-45-12

SYDNEY- NEWCASTLE – PERTH – 1300 362 954 – sales@repipe.com.au

Distributors of Quality Products Australia Wide



The data provided here is for information purposes only. Repipe reserves the right to change or modify this data without prior notice.

Y:\CATALOGUE & DATA SHEETS - MASTER\Datasheet Masters\STRAINERS\Y Strainer Grooved End Type.docx